



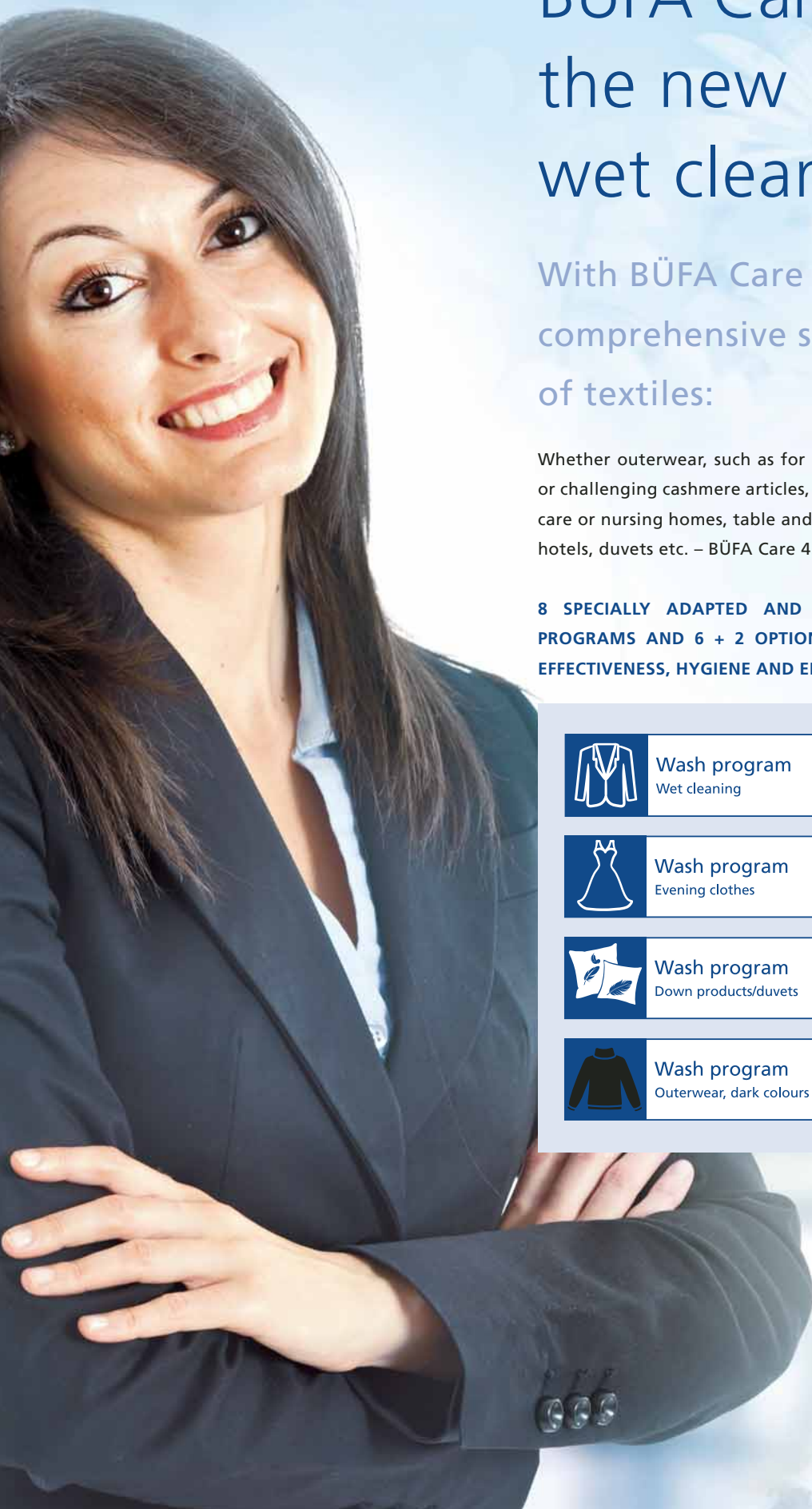
**BÜFA**

**BÜFA CARE 4.0**

Wet cleaning made brilliantly simple

Almost too good  
to be true ...

Cleaning



# BÜFA Care 4.0 – the new kind of wet cleaning

With BÜFA Care 4.0 you can offer comprehensive solutions for all kinds of textiles:

Whether outerwear, such as for example suits with a high wool component or challenging cashmere articles, high-quality delicate clothes and linen from care or nursing homes, table and kitchen linen as well as staff uniforms from hotels, duvets etc. – BÜFA Care 4.0 lets you care for everything.

**8 SPECIALLY ADAPTED AND COORDINATED WASHING AND DRYING PROGRAMS AND 6 + 2 OPTIONAL BÜFA PRODUCTS ENSURE MAXIMUM EFFECTIVENESS, HYGIENE AND EFFICIENCY.**

	Wash program Wet cleaning <b>1</b>		Wash program Outerwear, light colours <b>5</b>
	Wash program Evening clothes <b>2</b>		Wash program Business shirts <b>6</b>
	Wash program Down products/duvets <b>3</b>		Wash program Hotel linen <b>7</b>
	Wash program Outerwear, dark colours <b>4</b>		Wash program Kitchen and table linen <b>8</b>

# Wet cleaning – simply brilliant

**THIS PROGRAM PACKAGE REVOLVES AROUND THE NEW KIND OF WET CLEANING. THE CONCEPT IS CONVINCING FROM START TO FINISH: IMPROVED CLEANING PERFORMANCE AND EVEN GREATER PROTECTION, FEWER CASES OF DAMAGE – SO GREATER SAFETY, PLEASANT FRESHNESS FRAGRANCE AND EXCELLENT FEEL AND HANDLE, VIBRANT COLOURS, SHORT FINISHING TIME, REDUCED CREASE FORMATION.**

## **THE PROCESS IS BRILLIANTLY SIMPLE:**

All materials can be processed in just one batch, for example suits with a high wool content, silk articles, woollen blankets, challenging cashmere articles, businesswear made from high-quality materials and much more besides. It is no longer necessary to sort loads by fibre type or material composition, so now there is just one program.

## **THE PROCESS IS EXTREMELY COST-EFFECTIVE:**

Sorting is now only necessary between light-coloured and dark-coloured garments. 60% of the machine capacity is always used; product use is 30% lower than in traditional wet cleaning; process times are considerably shorter – cleaning, drying and finishing – ready in just one hour – even in the case of extremely delicate textiles.

## **THE PROCESS IS EXTREMELY POWERFUL:**

Optimised cleaning performance and reduced costs. Safe protection against shrinkage, felting, colour loss and crease formation.

## **THE PROCESS IS SAFE:**

No damage to textile fibres, shaping or colours; no special expert knowledge is necessary for processing anymore.

# Conclusion: This is perfection in entirety!





## Wash program Wet cleaning

1

CAUTION IS ONLY NECESSARY FOR WILD SILK, ACETATE AND ANGORA.

DELICATE TEXTILES MADE OF WOOL, SILK, VISCOSE, CASHMERE AND ALL WASHABLE ARTICLES WITH THE CARE SYMBOL W OR WASH-BY-HAND.

NOW YOU ONLY NEED TO SORT BETWEEN LIGHT AND DARK, AND NO LONGER ON THE BASIS OF FIBRE TYPE, MATERIAL COMPOSITION OR WEIGHT.

IF YOU DO NOT HAVE SUFFICIENT ARTICLES AVAILABLE FOR WET CLEANING, THEN FILL UP THE MACHINE LOADS WITH WASHABLE ARTICLES. AT LEAST 60% OF THE DRUM VOLUME MUST ALWAYS BE FILLED. THE RATIO OF WATER TO CHEMICALS AND THE MECHANICAL STRESS ARE THEN OPTIMAL AND THE COSTS PER GARMENT ARE REDUCED.

## The following products are of crucial importance for this wet cleaning program:

**OZERNA POLAR** – the powerful liquid detergent with active colour protection; also ideal for washable outerwear (jeans, sweatshirts etc.) and for wedding dresses, ladies' suits, uniforms, personal protective wear; a slight alkaline character coupled with highly effective surfactants result in impressive cleaning power.

**LIZERNA CARAT** – the textile finishing agent surrounds in particular delicate textiles with a protective finish; it prevents felting of wool, perceptibly reduces crease formation, and an odour absorber prevents unpleasant odours.

**LIZERNA CITRO** – a natural acid for lowering the pH value and for neutralising detergents in order to provide textiles with optimal protection.

**LIZERNA CONDITIONER** – the high-performance finishing agent, prepares textiles for drying in a very short time and protects against damage.

Only severe grease stains are pre-treated with the grease-solvent **OLDOPAL QUICK**.



## HOW THE WET CLEANING WASH PROGRAM WORKS:

The entire programme cycle in wet cleaning is oriented to maximum protection of the materials. The drum stands still as the water runs in: the protective function of Lizerna Carat is already active when the mechanical processing starts.

Low water level: the reduction of water and agents coupled with short, high mechanical activity allows a very good washing effect. The mechanical washing activity is set at five seconds movement and 25 seconds rest. When the water runs out, the drum remains still. This ensures high fibre protection.

In order to reduce the mechanical activity in the dryer and achieve short drying times, spinning takes place at highest possible speeds. Once the goods rest in place, there is no further additional mechanical stress.

## DRYER PROGRAM:

The standard program in wet cleaning: 15 minutes at 70 °C starting temperature, with reversing and gentle mechanical activity. Where necessary residual drying in the air.

## FURTHER PROCESSING

Generally further processing is unproblematic and similar to that after dry-cleaning with solvent or washing. In individual cases there may be a higher need for ironing in the case of jackets and inside seams. Finishing equipment with a stretching function and good suction extraction at the ironing board facilitate processing.





### Wash program Evening clothes

2

WEDDING DRESSES, EVENING DRESSES, CURTAINS

In particular textiles with appliqués, such as sequins, can be treated ideally with this program.

On the grounds of the washing conditions it is also ideal for cleaning all kinds of curtains.



### Wash program Down products/duvets

3

QUILTS AND DUVETS, FEATHERBEDS, CUSHIONS,  
DOWN JACKETS, SKI WEAR

The washing machine is always very fully loaded when featherbeds and down jackets are being washed. That is why the mechanical action is strongly reduced. With a short pre-wash followed by centrifuging, some of the air can be removed so that the optimal mechanical activity is ensured in the subsequent wash.

The neutral detergent Ozerna Polar achieves outstanding washing results. The fibre protection agent Lizerna Carat then ensures better regeneration of the down feathers in the subsequent drying process. This substantially shortens the drying time.



### Wash program Outerwear, dark colours

4

COLOURED WASHABLE TEXTILES

The fact that the products are coordinated with each other ensures good washing results, optimal stain removal, colour protection and easier ironing. This category includes for example

coloured jeans, cargo pants, sweatshirts, T-shirts as well as hotel staff uniforms. With this program it is even possible to provide ideal care for personal protective wear that is not too heavily soiled.



### Wash program Outerwear, light colours

5

WASHABLE TEXTILES WHITE/LIGHT-COLOURED

The coordinated products ensure good washing results, bleaching that is gentle to the fibres and

easier ironing. This category covers e.g. light-coloured jeans, sweatshirts, T-shirts, as well as hotel staff uniforms.



## Wash program Business shirts

# 6

### BUSINESS SHIRTS WHITE/LIGHT-COLOURED

In shirt service cleanliness and finish stand for a particularly good result. This special wash program achieves both. The program also represents a very

good alternative for care of heavily soiled, light-coloured textiles (items from program 5).



## Wash program Hotel linen

# 7

### HOTEL LINEN

All textiles used in a hotel can be treated with this simple wash program. These include in particular towels, bathrobes and bed linen. In the case of heavily soiled goods, Oldopal Quick should

additionally be added directly into the first washing bath. This excellent detergent booster ensures the necessary cleanliness.



## Wash program Kitchen and table linen

# 8

### RESTAURANT AND KITCHEN

This is where the most heavily soiled textiles are to be found – table linen, kitchen towels, work clothes from the kitchen etc. That is why this is also the most powerful process with a high washing

temperature. Stains are effectively removed. If the textiles are very heavily soiled with grease and oil, we recommend adding Oldopal Quick in the first washing bath.

#### FURTHER PRODUCTS FOR BÜFA CARE 4.0:

**OZERNA EVOLVE** – An ecological, alkaline all-purpose detergent with active agents obtained 100% from renewable raw materials; free from optical brighteners and scents; excellent washing performance, even in cases of heavy soiling or obstinate grease stains, and odour-absorbing effect.

**LIZERNA SYNERGY** – Innovative oxygen bleach for optimal stain removal; powerful against coloured stains, but at the same time extremely gentle to the fabric. Can also be used for colour-stable textiles (e.g. table linen)

#### FOR MANUAL DOSING WE RECOMMEND THE FOLLOWING SUPPLEMENTARY PRODUCTS:

**OLDOPAL QUICK** – Highly effective grease solvent and ideal brush-on agent; develops its full effect already at low temperatures.

**LIZERNA AURA** – State-of-the-art laundry finishing agent with encapsulated fragrance. In addition to a very pleasant handle, it finishes the laundry with a long-lasting fragrance. The textiles still smell pleasantly fresh even after long storage periods.

# BÜFA

Cleaning

**BÜFA Reinigungssysteme GmbH & Co. KG**  
August-Hanken-Straße 30  
26125 Oldenburg  
GERMANY

Telephone +49 441 9317-258  
Telefax +49 441 9317-140  
[www.buefa.de](http://www.buefa.de)

